



For Conscious Living

## INCENSE CONE



### Padma ❁ Lotus

Warm, earthy and sweet fragrance.

Promote relaxation and peace while enhancing mental clarity and focus.

Recommended for meditation and home fragrance.

*Our whole range of incense includes;*

*Padma - Lotus*

*Malli - Jasmine*

*Vetiver - Khus*

*Naga Linga - Cannonball*

*Tulsi - Holy Basil*

*Rajanigandha - TubeRose*

*Chandan - Sandal*

*Sampige - Champak*

*Manoranjitha - Ylang Ylang*

*Maragu - Marjoram*

*Krishna Tulsi - Blue Basil*

*Vilva - Indian Bael*

*Neem - Margosa*

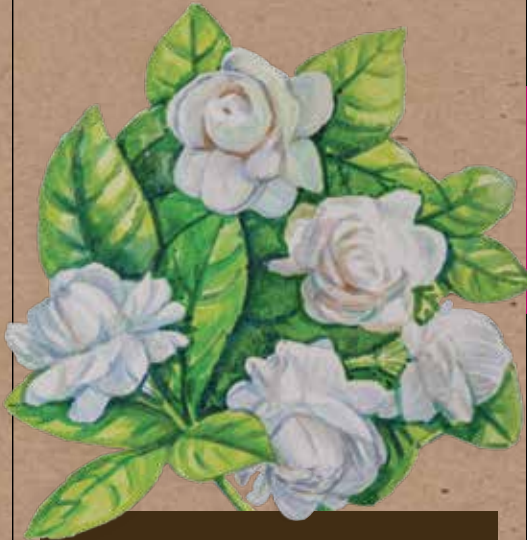
*Vibhuti - Holy ash*

*Davanam*



For Conscious Living

## INCENSE CONE



### Malli ❁ Jasmine

Sweet, green and rich woody fragrance.

Rejuvenates your body and mind by cultivating a sense of relaxation and bliss.

Recommended for home fragrance and worship.

*Our whole range of incense includes;*

*Padma - Lotus*

*Malli - Jasmine*

*Vetiver - Khus*

*Naga Linga - Cannonball*

*Tulsi - Holy Basil*

*Rajanigandha - TubeRose*

*Chandan - Sandal*

*Sampige - Champak*

*Manoranjitha - Ylang Ylang*

*Maragu - Marjoram*

*Krishna Tulsi - Blue Basil*

*Vilva - Indian Bael*

*Neem - Margosa*

*Vibhuti - Holy ash*

*Davanam*



For Conscious Living

## INCENSE CONE



### Vetiver

Earthy, woody and musky fragrance.

Known to bring about a sense of stillness and tranquility.

Recommended for home fragrance.

*Our whole range of incense includes;*

*Padma - Lotus*

*Malli - Jasmine*

*Vetiver - Khus*

*Naga Linga - Cannonball*

*Tulsi - Holy Basil*

*Rajanigandha - TubeRose*

*Chandan - Sandal*

*Sampige - Champak*

*Manoranjitha - Ylang Ylang*

*Maragu - Marjoram*

*Krishna Tulsi - Blue Basil*

*Vilva - Indian Bael*

*Neem - Margosa*

*Vibhuti - Holy ash*

*Davanam*



For Conscious Living

## INCENSE CONE



### Naga Linga

Woody and sweet fragrance.

Relieves anxiety and stress.

Recommended for home  
fragrance and worship.

*Our whole range of  
incense includes;*

*Padma - Lotus*

*Malli - Jasmine*

*Vetiver - Khus*

*Naga Linga - Cannonball*

*Tulsi - Holy Basil*

*Rajanigandha - TubeRose*

*Chandan - Sandal*

*Sampige - Champak*

*Manoranjitha - Ylang Ylang*

*Maragu - Marjoram*

*Krishna Tulsi - Blue Basil*

*Vilva - Indian Bael*

*Neem - Margosa*

*Vibhuti - Holy ash*

*Davanam*



For Conscious Living

## INCENSE CONE



### Tulsi ❁ Holy Basil

Rich, herbaceous and woody fragrance.  
Its healing properties and soothing effects  
provide relief for both the mind and body.

Recommended for rejuvenation  
and worship.

*Our whole range of  
incense includes;*

*Padma - Lotus*

*Malli - Jasmine*

*Vetiver - Khus*

*Naga Linga - Cannonball*

*Tulsi - Holy Basil*

*Rajanigandha - TubeRose*

*Chandan - Sandal*

*Sampige - Champak*

*Manoranjitha - Ylang Ylang*

*Maragu - Marjoram*

*Krishna Tulsi - Blue Basil*

*Vilva - Indian Bael*

*Neem - Margosa*

*Vibhuti - Holy ash*

*Davanam*



For Conscious Living

## INCENSE CONE



### Rajanigandha ❁ TubeRose

Sweet, exotic and velvety opulence.

Helps calm the body and the mind.

Recommended for meditation  
and home fragrance.

*Our whole range of  
incense includes;*

*Padma - Lotus*

*Malli - Jasmine*

*Vetiver - Khus*

*Naga Linga - Cannonball*

*Tulsi - Holy Basil*

*Rajanigandha - TubeRose*

*Chandan - Sandal*

*Sampige - Champak*

*Manoranjitha - Ylang Ylang*

*Maragu - Marjoram*

*Krishna Tulsi - Blue Basil*

*Vilva - Indian Bael*

*Neem - Margosa*

*Vibhuti - Holy ash*

*Davanam*



For Conscious Living

## INCENSE CONE



### Chandan ❁ Sandal

Warm, ambery and woody fragrance.

Has a powerful calming and soothing effect on the body and mind, helping to induce relaxation and focus.

Recommended for home fragrance and meditation.

*Our whole range of incense includes;*

*Padma - Lotus*

*Malli - Jasmine*

*Vetiver - Khus*

*Naga Linga - Cannonball*

*Tulsi - Holy Basil*

*Rajanigandha - TubeRose*

*Chandan - Sandal*

*Sampige - Champak*

*Manoranjitha - Ylang Ylang*

*Maragu - Marjoram*

*Krishna Tulsi - Blue Basil*

*Vilva - Indian Bael*

*Neem - Margosa*

*Vibhuti - Holy ash*

*Davanam*



For Conscious Living

## INCENSE CONE



### Sampige ❁ Champak

Rich, fruity and musky fragrance.  
Calms the mind and fosters tranquillity,  
which in turn uplifts the mood.  
Recommended for home fragrance  
and meditation.

*Our whole range of  
incense includes;*

*Padma - Lotus*

*Malli - Jasmine*

*Vetiver - Khus*

*Naga Linga - Cannonball*

*Tulsi - Holy Basil*

*Rajanigandha - TubeRose*

*Chandan - Sandal*

*Sampige - Champak*

*Manoranjitha - Ylang Ylang*

*Maragu - Marjoram*

*Krishna Tulsi - Blue Basil*

*Vilva - Indian Bael*

*Neem - Margosa*

*Vibhuti - Holy ash*

*Davanam*



For Conscious Living

## INCENSE CONE



**Manoranjitha**

**Ylang Ylang (climbing)**

Sweet, fruity and rich fragrance.

Helps in calming nerves by slowing pulse rate and respiration. Immensely comforting.

Recommended for home fragrance and worship.

*Our whole range of incense includes;*

**Padma** - Lotus

**Malli** - Jasmine

**Vetiver** - Khus

**Naga Linga** - Cannonball

**Tulsi** - Holy Basil

**Rajanigandha** - TubeRose

**Chandan** - Sandal

**Sampige** - Champak

**Manoranjitha** - Ylang Ylang

**Maragu** - Marjoram

**Krishna Tulsi** - Blue Basil

**Vilva** - Indian Bael

**Neem** - Margosa

**Vibhuti** - Holy ash

**Davanam**



For Conscious Living

## INCENSE CONE



### Maragu \* Marjoram

Warm, spicy and woody fragrance.

Aids in balancing body and mind,  
relieves stress and anxiety.

Recommended for home fragrance.

*Our whole range of  
incense includes;*

*Padma - Lotus*

*Malli - Jasmine*

*Vetiver - Khus*

*Naga Linga - Cannonball*

*Tulsi - Holy Basil*

*Rajanigandha - TubeRose*

*Chandan - Sandal*

*Sampige - Champak*

*Manoranjitha - Ylang Ylang*

*Maragu - Marjoram*

*Krishna Tulsi - Blue Basil*

*Vilva - Indian Bael*

*Neem - Margosa*

*Vibhuti - Holy ash*

*Davanam*



For Conscious Living

## INCENSE CONE



### Davanam

Sweet, tea-like fragrance reminiscent of dried fruit.

Soothes the nerves and restores emotional calm.

Beneficial in fighting bacterial and viral infection.

Recommended for home fragrance and worship.

*Our whole range of  
incense includes;*

*Padma - Lotus*

*Malli - Jasmine*

*Vetiver - Khus*

*Naga Linga - Cannonball*

*Tulsi - Holy Basil*

*Rajanigandha - TubeRose*

*Chandan - Sandal*

*Sampige - Champak*

*Manoranjitha - Ylang Ylang*

*Maragu - Marjoram*

*Krishna Tulsi - Blue Basil*

*Vilva - Indian Bael*

*Neem - Margosa*

*Vibhuti - Holy ash*

*Davanam*



For Conscious Living

## INCENSE CONE



### Krishna Tulsi ❁ Blue Basil

Earthy, herbaceous, and woody fragrance.

Reputed to calm, energize and uplift the mind. It is also said to repel insects, eliminate odor-causing bacteria and soothe headaches.

Recommended for home fragrance.

*Our whole range of  
incense includes;*

*Padma - Lotus*

*Malli - Jasmine*

*Vetiver - Khus*

*Naga Linga - Cannonball*

*Tulsi - Holy Basil*

*Rajanigandha - TubeRose*

*Chandan - Sandal*

*Sampige - Champak*

*Manoranjitha - Ylang Ylang*

*Maragu - Marjoram*

*Krishna Tulsi - Blue Basil*

*Vilva - Indian Bael*

*Neem - Margosa*

*Vibhuti - Holy ash*

*Davanam*



For Conscious Living

## INCENSE CONE



### Vilva ❁ Indian Bael

Relaxing & sweet camphor note fragrance.

Known to calm, energize and revitalize the mind, an aromatic presence that creates a tranquil atmosphere.

Recommended for worship and meditation.

*Our whole range of incense includes;*

*Padma - Lotus*

*Malli - Jasmine*

*Vetiver - Khus*

*Naga Linga - Cannonball*

*Tulsi - Holy Basil*

*Rajanigandha - TubeRose*

*Chandan - Sandal*

*Sampige - Champak*

*Manoranjitha - Ylang Ylang*

*Maragu - Marjoram*

*Krishna Tulsi - Blue Basil*

*Vilva - Indian Bael*

*Neem - Margosa*

*Vibhuti - Holy ash*

*Davanam*



For Conscious Living

## INCENSE CONE



### Neem

Fresh & pleasant natural fragrance of neem tree.

Known to eliminate viruses and fungi.

Recommended as an insect repellent.

*Our whole range of incense includes;*

*Padma - Lotus*

*Malli - Jasmine*

*Vetiver - Khus*

*Naga Linga - Cannonball*

*Tulsi - Holy Basil*

*Rajanigandha - TubeRose*

*Chandan - Sandal*

*Sampige - Champak*

*Manoranjitha - Ylang Ylang*

*Maragu - Marjoram*

*Krishna Tulsi - Blue Basil*

*Vilva - Indian Bael*

*Neem - Margosa*

*Vibhuti - Holy ash*

*Davanam*



For Conscious Living

## INCENSE CONE



### Vibhuti ❁ Holy ash

Woody, subtle and sweet fragrance.

Creates a conducive atmosphere to restore  
and energize the mind and body.

Recommended for meditation and worship.

*Our whole range of  
incense includes;*

*Padma - Lotus*

*Malli - Jasmine*

*Vetiver - Khus*

*Naga Linga - Cannonball*

*Tulsi - Holy Basil*

*Rajanigandha - TubeRose*

*Chandan - Sandal*

*Sampige - Champak*

*Manoranjitha - Ylang Ylang*

*Maragu - Marjoram*

*Krishna Tulsi - Blue Basil*

*Vilva - Indian Bael*

*Neem - Margosa*

*Vibhuti - Holy ash*

*Davanam*



100% Pure & Natural Product Made with Ethical & Certified Methods.



Always keep incense sticks on a heat resistant surface, free of inflammable materials like clothes, papers, curtains.



Our Oils & Blends are Certified Organic.



Sustainably Produced with Rural Communities & Supports Local Agriculture.



Hand Rolled



Mktd. by: **Isha Life Pvt. Ltd.**  
Door No: 8/93 Siruvani Main Road,  
Madhampatti, Coimbatore -641010,  
Tamil Nadu, India

For Feedback and Suggestions, Please write to  
customercare.retail@ishalife.com  
ishalife.com

Mfg. by: **Vittal Lalitham Aashivaad**  
2A, VKV Thottam, NGGO Colony, (Post)  
Coimbatore - 641022 Tamil Nadu, India

Mfg. Lic. No: MSME UDYOG AADHAR  
REG.NO. UAN - TN03A0063827  
MSME UDYOG REG. NO TN-03-0087852

2.25 x .75 in Barcode

Burning incense isn't just about creating a pleasant atmosphere; it's about purifying the air and providing a touch of liveliness. This can only be achieved when the incense is made from natural resin and essential oils. Whether it's used for relaxation, meditation or just for a pleasant scent, burning incense can make an undeniable difference in the environment.



isha  
LIFE

For Conscious Living